

st Brad Aagaard describes animations created using computer-generated magnitude quake on the Hayward fault, which were released at a news conference. These simulations can help Bay Area city planners and emergency managers

ANDA CHU/STAFF

## yield clues for next quake

Footage of scientists using the simulations is available at <http://earthquake.usgs.gov/nca/simulations/>

Geologist with the Geological Survey. Officials said research combined with the simulations indicates an estimated 2 million people will "experience strong enough damage." Furthermore, a magnitude 7.5 quake on the fault and 8 in Oakland could cause economic losses as a result of damage, said Mary Zoback, vice president of

Earthquake Risk Applications at Risk Management Solutions.

That figure surpasses the combined economic losses from the 1989 Loma Prieta earthquake, 1992's Hurricane Andrew and Hurricane Katrina in 2005.

According to projections, the same hypothetical quake could cause as many as 4,500 deaths and 140,000 displaced households.

"Damage will be focused along the urban core of the East Bay," Zoback said, adding that only 7 percent to 8 percent of those losses will be covered by insurance. "The impact of the next large earthquake on the Hayward fault will be determined by what we do now to prepare for it."

See QUAKE, Page 4



ANDA CHU/STAFF

**DAVID SCHWARTZ**, co-chairman of the 1886 Hayward Earthquake Alliance, speaks during a news conference Tuesday at Cal State East Bay in Hayward.

See PARKING, Page 5

## officers man

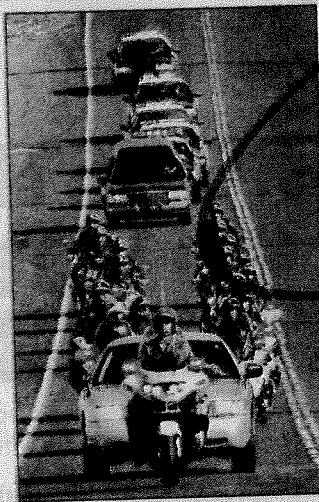
### to help

Those wishing to donate to the Memorial Fund for Moody should send checks to any Mechanics Bank branch or mail to Mechanics Bank, 3170 Mall Road, Richmond, 94806.

In recalling the small that showed Moody for a noble, fair and friendly officer he was.

Early, Brad's life ended soon," said Richmond Officer David Funk, Moody's partner for years in a officer patrol car. "He was a cop. He loved the job

See OFFICER, Page 4



DAN ROSENSTRAUCH/STAFF

**A POLICE** procession for Richmond police officer Brad Moody makes its way to a memorial service Tuesday. Moody, 29, was taken off life-support Oct. 7 after his patrol car crashed near the Richmond Police Department on Oct. 5.

## Turning room service into community service

Program pulls money from ritzy Pleasant Hill hotel to help four Monument Corridor civic-based programs

By Matthias Gafni  
STAFF WRITER

Through a central Contra Costa pilot program, patrons of a ritzy Pleasant Hill hotel have been funding four Monument Corridor community services programs for Latino populations.

The groups estimate that they've taken \$600,000 in Contra Costa Future Funds and saved county taxpayers \$5 million to \$7 million.

The project receives Renaissance/Club Sport Hotel's tran-

sit occupancy tax proceeds. The hotel in unincorporated Pleasant Hill yielded \$747,000 in tax revenue last fiscal year, money that otherwise would have gone into the county's general fund.

Four programs that serve the Monument Corridor area — Welcome Home Baby, We Care, La Clinica de la Raza and Mt. Diablo Unified School District — reported a successful first year at the Contra Costa board of supervisors' meeting Tuesday.

"What's unique about this program is it provides a data-driven model," said Supervisor Susan Bonilla of Concord. "It's saving future taxpayers

See SERVICE, Page 4

## Service

FROM PAGE 3

viding intervention, redirection and help before problems escalate."

In its report, La Clinica de la Raza spoke of a young boy who visited the county's emergency room five times two years ago before joining its asthma program. After spending one year in the program, the boy controlled his asthma and avoided the emergency room. The organization estimated it saved the county about \$20,000 to \$1 million in emergency room visits and school absences.

The four groups assisted more than 1,200 families last fiscal year and leveraged more than \$760,000 for their programs through additional private funding.

In 2003, former supervisor Mark DeSaulnier, now a state assemblyman, proposed the idea to devote the hotel tax to Monument Corridor community programs in hopes of curbing the high cost of crisis services, such as emergency room visits. Two years later, groups were selected to receive these funds. The grantees received \$50,000 for planning, \$100,000 for first-year implementation and an additional \$100,000 this fiscal year.

The other programs reported similar successes:

■ Welcome Home Baby supports first-time parents with home visits. The group served 161 families and made 766 home visits last fiscal year, saving the county \$774,000 to \$2.2 million in emergency room visits and child welfare referrals, the group estimated.

All of their young, high-risk

families now have infants with medical coverage and a primary medical home, as well as up-to-date immunizations, the group reported.

■ We Care provides mental health services through an array of therapeutic services. The group treated 17 of the highest need children younger than 6.

■ Mt. Diablo Unified School District after-school program served 993 students, leveraging \$87,000 from other sources. The programs at Monument Corridor area schools saved an estimated \$1.6 million to \$3.3 million through child care costs, health-related complications, academic performance and increased school attendance.

Reach Matthias Gafni at 925-952-5053 or [mgafni@bayareanewsgroup.com](mailto:mgafni@bayareanewsgroup.com).

## Quake

FROM PAGE 3

Scientists began working on the simulations about a year ago.

Research, models of ground materials and recordings of past earthquakes helped scientists understand how the Bay Area ground moves. A supercomputer was used to create the simulations based on the information and three-dimensional geologic and seismic models.

"We do not know precisely where the shaking will start," said Brad Aagaard, a USGS geophysicist. "But we do know the pattern of the shaking based on past events."

Thirty-five scenarios have

been generated using the simulations, with varying epicenters along the Hayward fault, which runs through Richmond and down to San Jose.

Areas near the fault are more susceptible to strong and persistent shaking, Aagaard said. Areas that consistently showed the greatest impact in all earthquake simulations were the Evergreen basin just east of San Jose, the Livermore basin and just underneath the San Pablo basin. Meanwhile, areas on more rigid ground and harder bedrock — such as Mount Hamilton and Mount Diablo — showed low-intensity impact during all simulations, Aagaard said.

The simulations released Tuesday come a week before the 140th anniversary of the

1868 Hayward earthquake on Oct. 21.

Scientists said the past five large earthquakes on the Hayward fault have been on average about 140 years apart.

Officials said the Bay Area is one of the more prepared places in the country for an earthquake, given recent investments by cities and government agencies to retrofit and upgrade facilities.

"We are making progress," Zoback said. "But a lot still needs to be done."

View the earthquake simulations online at <http://earthquake.usgs.gov/regional/nca/simulations/hayward/>.

Reach Kristofer Noceda at 510-293-2479 or [knoceda@bayareanewsgroup.com](mailto:knoceda@bayareanewsgroup.com).

## BART

FROM PAGE 3

on sidewalks as news helicopters circled overhead. BART police, the Contra Costa Fire District and the sheriff's office were among the agencies responding.

The operator of the train took a drug test and will be placed on paid administrative leave during the investigation.

The state office of Occupational Safety and Health,

also investigating the death, as is often the case with workplace accidents.

The fatal accident is the first for BART since Jan. 12, 2001, when a worker was struck and killed in an underground section of track between 16th Street-Mission and 24th Street-Mission stations in San Francisco. Four other BART workers have died on the job in the agency's 36 years of operation.

The accident slowed trains on most lines, Johnson said.

Bay Point line was the most affected.

Pittsburg-bound trains were turned around at the Lafayette station, and San Francisco-bound trains were turned around at Pleasant Hill.

Shuttle buses took passengers between those two points until 12:45 p.m., when the tracks reopened and service was restored.

Robert Salonga covers public safety. Reach him at 925-943-8013 or [rsalonga@bayareanewsgroup.com](mailto:rsalonga@bayareanewsgroup.com).

## Officer

FROM PAGE 3

and he did it right. A things got tough, Brad just crack that t smile and elevate the to a better place."

Moody, 29, died wreck near the I Police Department c Moody — a canine o SWAT team membe out in his patrol car slicked Marina Bay and crashed into a l dard while respond call. His dog, Rico, without serious injur

Moody went off lif and his organs were Oct. 7.

Before a huge c of officers from arou ern California, includ 100 police dogs, Rich lice Chief Chris Mag humously awarded M department's Dist Service Award.

"Even under the circumstances, Rich be a challenging pla police officer," Mag "But Brad accepted"